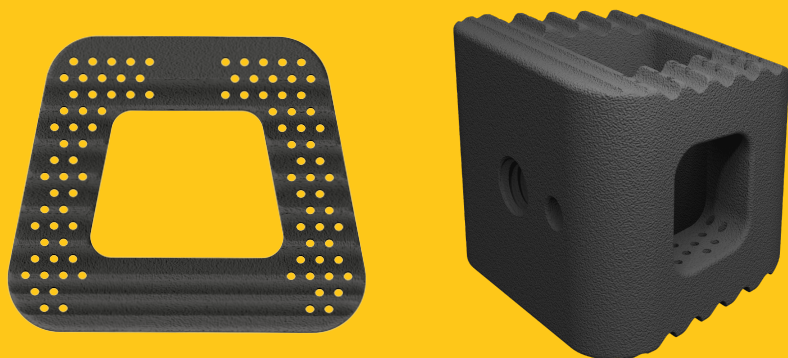


MATISSE **NITRO**TM

A SILICON NITRIDE PRODUCT

ANTERIOR CERVICAL INTERBODY FUSION DEVICE

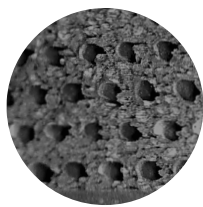
MATISSE NITROTM anterior cervical interbody fusion device is CTL Amedica's exclusive and enhanced addition to the NITROTM family of interbody implants crafted entirely of the heavily researched and proven biomaterial, silicon nitride.



FEATURES & BENEFITS



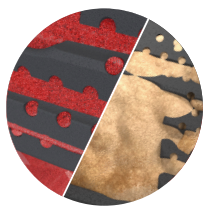
Precisely Sized Axial Pores



Macro-Texturing



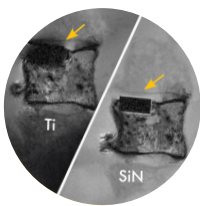
Integration Options & Configurations



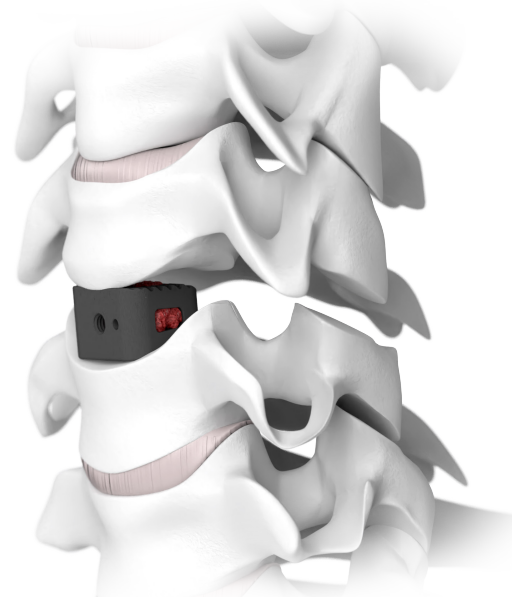
Enhanced Osteogenic Response^{1,2}



Bacteriostatic Properties²



Artifact-Free Imaging



¹ Webster TJ, Patel AA, Rahaman MN, Sonny Bal B. Anti-infective and osteointegration properties of silicon nitride, poly(ether ether ketone), and titanium implants [published online ahead of print July 31, 2012]. Acta Biomater.

² Gorth DJ, Puckett S, Ercan B, Webster TJ, Rahaman M, Bal BS. Decreased bacteria activity on Si(3)N(4) surfaces compared with PEEK or titanium. Int J Nanomedicine. 2012;7:4829-4840.

MATISSE NITRO[™]

SYSTEM SPECIFICATIONS



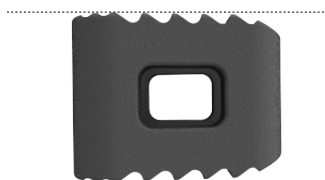
MATISSE NITRO[™] SILICON NITRIDE CAGES

W14xL12

Lordosis	Part Number	Height(mm)
----------	-------------	------------

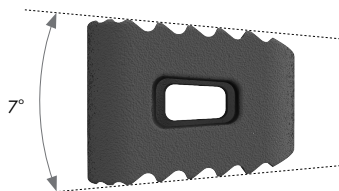
0°

213.4206	6
213.4207	7
213.4208	8
213.4209	9
213.4210	10



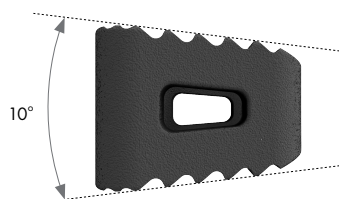
7°

213.4506	6
213.4507	7
213.4508	8
213.4509	9
213.4510	10



10°

213.4236	6
213.4237	7
213.4238	8
213.4239	9
213.4240	10



W17xL14

Lordosis	Part Number	Height(mm)
----------	-------------	------------

0°

213.4306	6
213.4307	7
213.4308	8
213.4309	9
213.4310	10

7°

213.4516	6
213.4517	7
213.4518	8
213.4519	9
213.4520	10

10°

213.4336	6
213.4337	7
213.4338	8
213.4339	9
213.4340	10

