



CTL AMERICA
rethink what's possible®

PREFERENCE 2™

THORACOLUMBAR PEDICLE SCREW SYSTEM

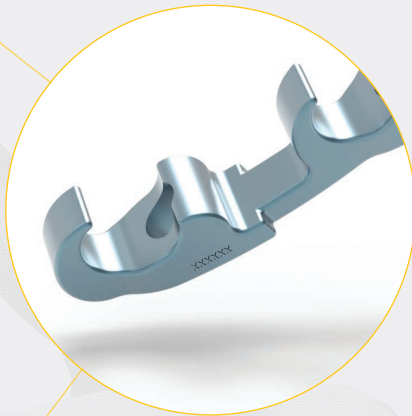
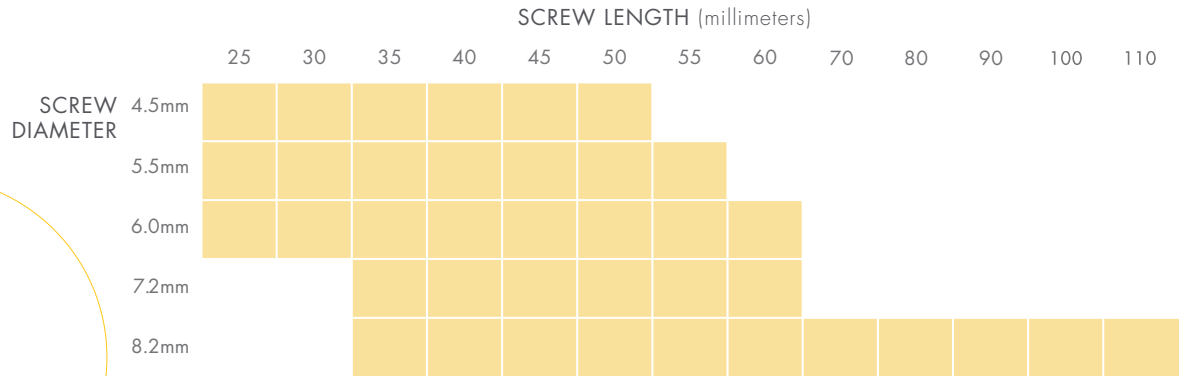
The Preference 2™ Pedicle System consists of various rods, multi-action monoaxial and polyaxial pedicle screws, robust connecting components and locking set screws, which together can be rigidly fixated into a variety of configurations. The Preference 2™ Pedicle Screw System provides strong and secure fixation, while allowing intra-operative flexibility.



- Low-profile implants help *reduce soft tissue disruption*
- Patented Helical Flange™ technology *prevents head splay without compromising grip on the rod*
- Cross-connectors enable multi-plane adjustments to *facilitate placement on any construct*

PREFERENCE 2™ POLYAXIAL SCREWS

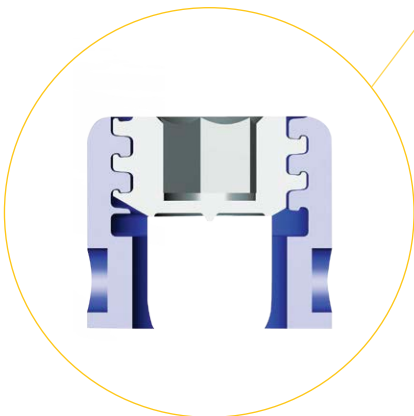
Monoaxial screws, cross-connectors, reduction screws and rods are also available.



Adjustable cross-connectors fit any construct

Telescoping cross-connectors span from rod to rod, allowing for variability in the sagittal and coronal planes. Three set screws lock the cross-connectors in place with 40 in./lbs. of closure torque.

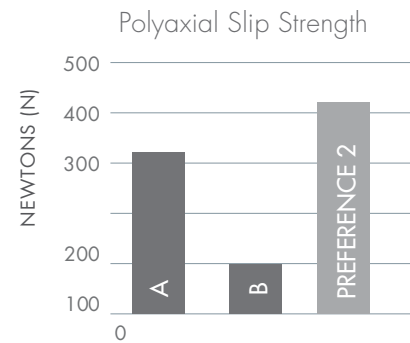
- For easy access, set screws are angled across the midline.
- Pre-bent, for clearance over neural tissues.
- Cross-connector sizes span from 38mm to 92mm in length
- For use with 5.5mm diameter Titanium and Cobalt Chromium rods



Helical Flange technology prevents head splay

The Helical Flange is an anti-splay technology that prevents the head-splay associated with traditional top-loading pedicle screws. Interlocking flanges on the Rod Blocker and Tulip contain the spreading forces, so the construct cannot loosen.

Helical Flange Closure Comparison*



*Helical Flange Closure Technology prevents head-splay without compromising grip on the rod.