

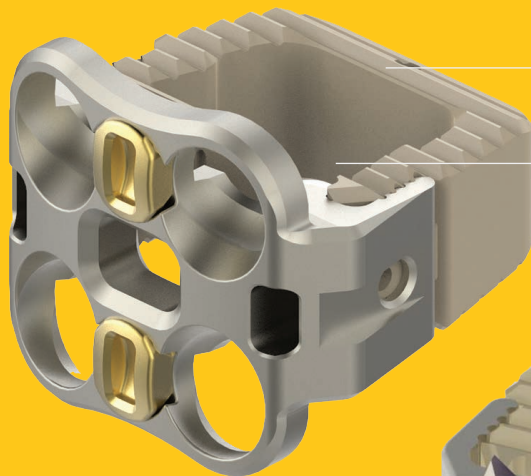


**CTL AMERICA**  
rethink what's possible®

## MONET™

### ANTERIOR CERVICAL FUSION SYSTEM

The Monet™ Anterior Cervical Fusion system is designed for intra-operative flexibility. The cage component can be implanted in conjunction with the Monet™ supplemental fixation plates, making it a truly comprehensive Anterior Cervical Fusion solution.



*Tapered leading edge for ease of insertion*

*Large graft window allows for maximum graft volume and greater likelihood of fusion*

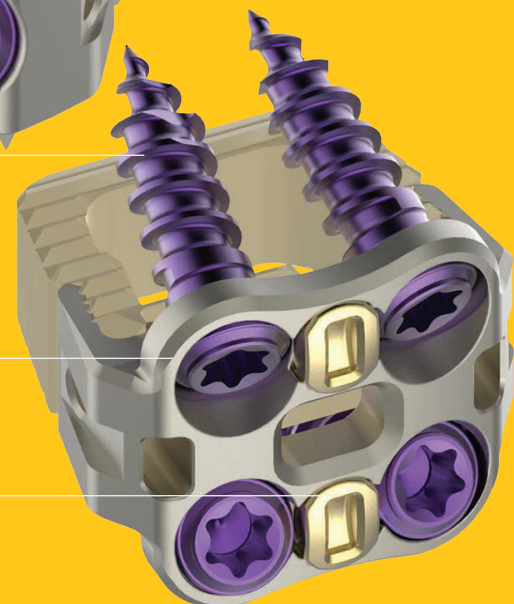
*Torsional stabilizers enhance rotational stability*

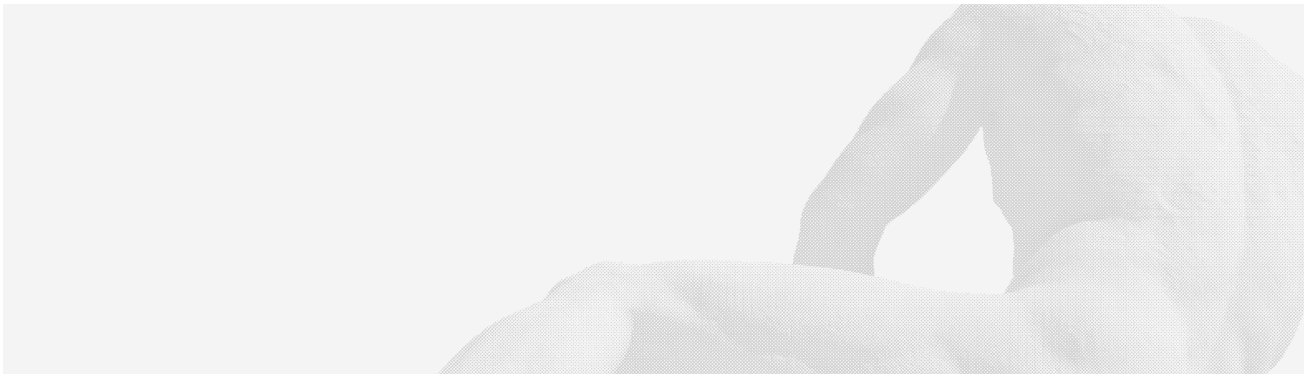


*Multiple screw options*

*Two and Four hole plate configurations accommodate anatomical variation*

*Efficient screw blocking mechanism*





### Monet™ ACIF Cage, Small & Medium

| 0 Degree    | 8 Degree    | Size |             |
|-------------|-------------|------|-------------|
| Part Number | Part Number | S/M  | Height (mm) |
| 113.4106    | 113.4206    | S    | 6           |
| 113.4107    | 113.4207    | S    | 7           |
| 113.4108    | 113.4208    | S    | 8           |
| 113.4109    | 013.4209    | S    | 9           |
| 113.4110    | 113.4210    | S    | 10          |
| 113.4306    | 113.4406    | M    | 6           |
| 113.4307    | 113.4407    | M    | 7           |
| 113.4308    | 113.4408    | M    | 8           |
| 113.4309    | 113.4409    | M    | 9           |
| 113.4310    | 113.4410    | M    | 10          |

### Monet™ ACIF Plate, Small & Medium

| 2 Hole      | 4 Hole      |             |
|-------------|-------------|-------------|
| Part Number | Part Number | Height (mm) |
| 113.1106    | 113.1406    | 6           |
| 113.1107    | 113.1407    | 7           |
| 113.1108    | 113.1408    | 8           |
| 113.1109    | 113.1409    | 9           |
| 113.1110    | 113.1410    | 10          |
| 113.1206    | 113.1506    | 6           |
| 113.1207    | 113.1507    | 7           |
| 113.1208    | 113.1508    | 8           |
| 113.1209    | 113.1509    | 9           |
| 113.1210    | 113.1510    | 10          |

### Monet™ ACIF Screw, 3.5mm Diameter

| Fixed, Self Drilling | Fixed, Self Tapping | Variable, Self Drilling | Variable, Self Tapping |             |
|----------------------|---------------------|-------------------------|------------------------|-------------|
| Part Number          | Part Number         | Part Number             | Part Number            | Length (mm) |
| 113.0512             | 113.0712            | 113.0112                | 113.0312               | 12          |
| 113.0514             | 113.0714            | 113.0114                | 113.0314               | 14          |
| 113.0516             | 113.0716            | 113.0116                | 113.0316               | 16          |
| 113.0518             | 113.0718            | 113.0118                | 113.0318               | 18          |
| 113.0520             | 113.0720            | 113.0120                | 113.0320               | 20          |

### Monet™ ACIF Screw, 4.0mm Diameter

| Fixed, Self Drilling | Fixed, Self Tapping | Variable, Self Drilling | Variable, Self Tapping |             |
|----------------------|---------------------|-------------------------|------------------------|-------------|
| Part Number          | Part Number         | Part Number             | Part Number            | Length (mm) |
| 113.0612             | 113.0812            | 113.0212                | 113.0412               | 12          |
| 113.0614             | 113.0814            | 113.0214                | 113.0414               | 14          |
| 113.0616             | 113.0816            | 113.0216                | 113.0416               | 16          |
| 113.0618             | 113.0818            | 113.0218                | 113.0418               | 18          |
| 113.0620             | 113.0820            | 113.0220                | 113.0420               | 20          |